

## MOUNTING



## APV

**Power cable with aluminum core, with polyvinylchloride insulation and polyvinylchloride sheath**

## APV-LS

**The same as APV, but with low gas and smoke polyvinyl chloride insulation.**

## STANDARD

GOST 6323-79 26445-85  
31947-2012

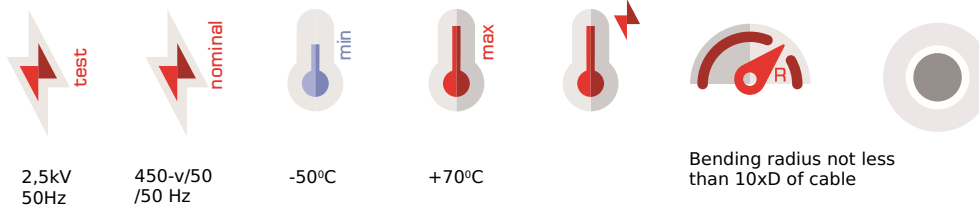
## FOREIGN ANALOGUE

АПВ GOST 6323-79 26445-85 31947-2012  
N2XSJY DIN VDE 0276-620-96

## APPLICATION

For lighting and power circuits while stationary laying in electric devices, for inflexible installation in electric devices, machinery, mechanisms and industrial machines for rated voltage up to 450V (for networks 450/750V) frequency up to 400 Hz or permanent voltage 1000V. Is used for laying in empty places of steel pipes and construction structures, where there are not frequent bends of the conductor.

The conductor is flame retardant.



- Installation temperature: not less than -15°C.
- The max. allowable core heating temperature in short circuit with duration of not more than 4 seconds must not exceed 250°C.
- The insulation is resistant to cracking: +150°C. Deformation: +70°C.
- The conductor is resistant to 100% relative air humidity under +35°C.

## CONSTRUCTION

The aluminum cores with section 2,5:16mm<sup>2</sup> inclusive are produced with one wire of 1 class flexibility, according to standard 22483, 25-240mm<sup>2</sup> are produced with twisted multi-core wire 2 class flexibility according to standard 22483-2012. Insulation of the conductor is made in different colors

## THE CONSTRUCTION LENGTH OF THE CABLE

not less than 100m

## PACKING

On wooden drum or bundles (coils).

## LABELING

Label attached to wooden drum or bundle (coils). An inscription is made on conductor core: JSC Sakcable, cable brand, metric.

## SERVICE LIFETIME

not less than 15 years

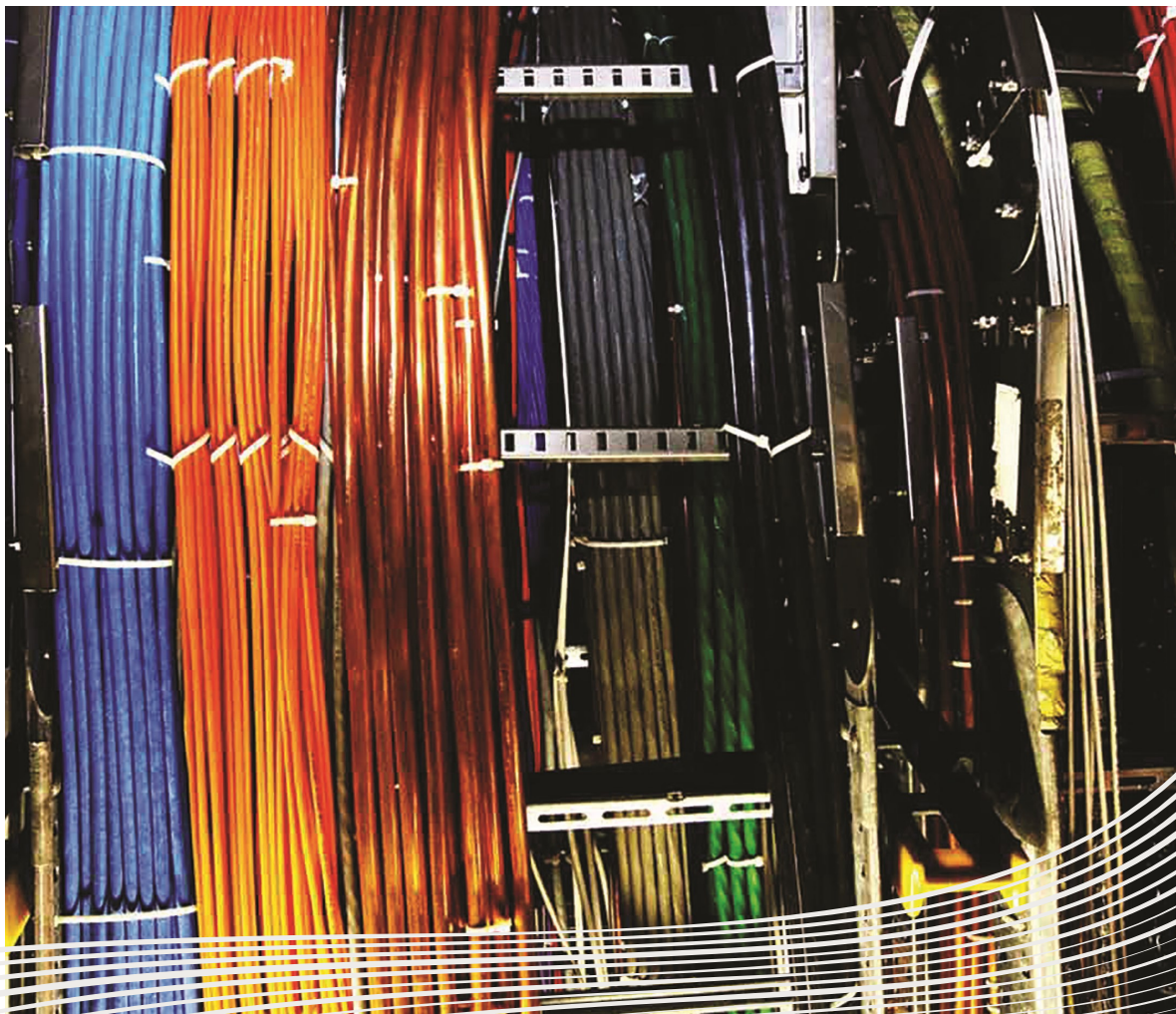
## WARRANTY PERIOD

2 years after entering into service, in the proper installation and working conditions.

APV GOST 6323-79 26445-85 31947-2012

| Part Name | Conductor resistance [Ω/km] | Ampacity (in air) [A] | Thickness of insulation [mm] | Outer diameter [mm] | Bending radius [mm] | Aluminium Weight [kg/km] | Weight [kg/km] |
|-----------|-----------------------------|-----------------------|------------------------------|---------------------|---------------------|--------------------------|----------------|
| 2,5 re    | 12,1                        | 23                    | 0,8                          | 3,4                 | 34                  | 6,75                     | 12,83          |
| 4 re      | 7,41                        | 31                    | 0,8                          | 3,9                 | 39                  | 10,8                     | 18,18          |
| 6 re      | 5,11                        | 38                    | 0,8                          | 4,4                 | 44                  | 16,2                     | 24,78          |
| 10 re     | 3,08                        | 60                    | 1                            | 5,6                 | 56                  | 27                       | 42,75          |
| 16 re     | 1,91                        | 75                    | 1                            | 6,6                 | 66                  | 43,2                     | 62,38          |
| 16 rm     | 1,91                        | 75                    | 1                            | 6,8                 | 68                  | 43,84                    | 69,68          |
| 25 re     | 1,20                        | 105                   | 1,2                          | 8                   | 80                  | 67,5                     | 97,77          |
| 25 rm     | 1,20                        | 105                   | 1,2                          | 8,5                 | 85                  | 68,52                    | 108,96         |
| 35 re     | 0,868                       | 130                   | 1,2                          | 8,4                 | 84                  | 94,5                     | 127,01         |
| 35 rm     | 0,868                       | 130                   | 1,2                          | 9,8                 | 98                  | 95,92                    | 140,82         |
| 50 re     | 0,641                       | 165                   | 1,4                          | 10,5                | 105                 | 135                      | 175,07         |
| 50 rm     | 0,641                       | 165                   | 1,4                          | 12                  | 120                 | 137                      | 191,6          |
| 70 rm     | 0,443                       | 210                   | 1,4                          | 13,15               | 131                 | 189                      | 265,62         |
| 95 rm     | 0,320                       | 250                   | 1,6                          | 16,8                | 168                 | 256,5                    | 356,11         |
| 120 rm    | 0,253                       | 295                   | 1,6                          | 17,5                | 175                 | 324                      | 437,26         |
| 150 rm    | 0,206                       | 340                   | 1,8                          | 13,75               | 138                 | 405                      | 527,97         |
| 185 rm    | 0,164                       | 395                   | 1,8                          | 20,7                | 207                 | 449,5                    | 653,11         |
| 240 rm    | 0,125                       | 465                   | 1,8                          | 23,6                | 236                 | 648                      | 851,41         |

**i** re - Single-core  
rm - Multi-core



Uninsulated

Self-supporting

Mounting

Power

Control